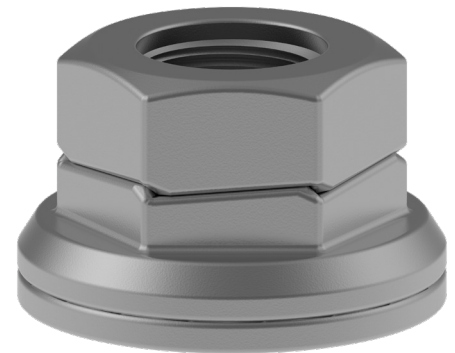


Disc-Lock™ Safety Wheel Nut - Data Sheet

Introduction

Disc-Lock™ 3-piece Class 10 Safety Wheel Nuts are specifically designed to prevent wheel loss on commercial vehicles. Disc-Lock™ Safety Wheel Nuts have been proven to provide guaranteed performance from the combination of lateral/bending forces placed on wheels during cornering and torsional forces from braking and accelerating.

In fact any dynamic external forces applied to the wheel causes the interlocking cams of the Disc-Lock™ Safety Wheel Nut to rise against each other which actually locks the assembly further.



Installation & Removal

Disc-Lock™ Safety Wheel Nuts are easy to install and can be used as a direct replacement for standard wheel nuts. They are fitted in exactly the same way as a standard wheel nut but require a larger socket size.

It is best to use a specific Disc-Lock™ socket that accurately fits over both the hex-nut and hex-washer however a standard impact type socket can also be used with care.

Products

Disc-Lock™ Safety Wheel Nuts are available in the following sizes and dimensions.

Item	A	B	C
M18 x 1.5p	29mm	48mm	34mm
M20 x 1.5p	29mm	48mm	34mm
M20 x 2.5p	29mm	48mm	34mm
M22 x 1.5p	34mm	52mm	38mm
7/8" -11 BSF	34mm	52mm	38mm

